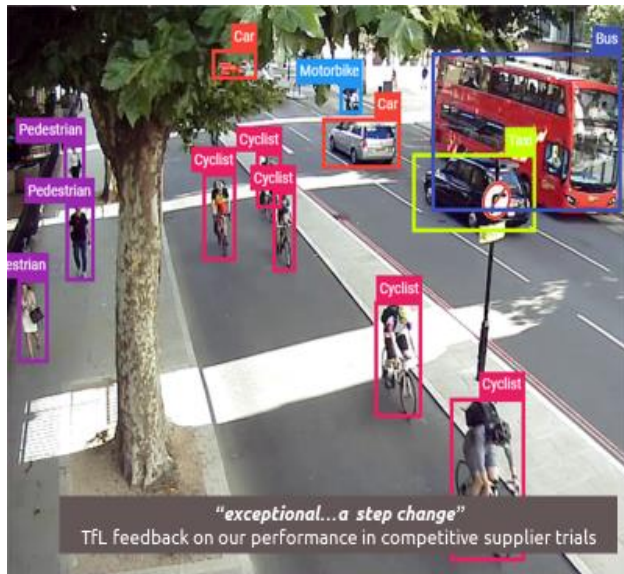


# Appendix 1



## Classification & Counting

Providing real-time, on-device counting & classification, using the same algorithms as in driverless vehicles.

# 97%

accuracy validated by TfL vs. human counting  
TfL are now rolling out at scale, as **no other technology** can provide our level of insight.

# 9

classifications, including pedestrian, cyclist, motorbike, car, taxi, LGV (van), PSV (bus), OGV1 (rigid HGVs) and OGV2 (articulates)

